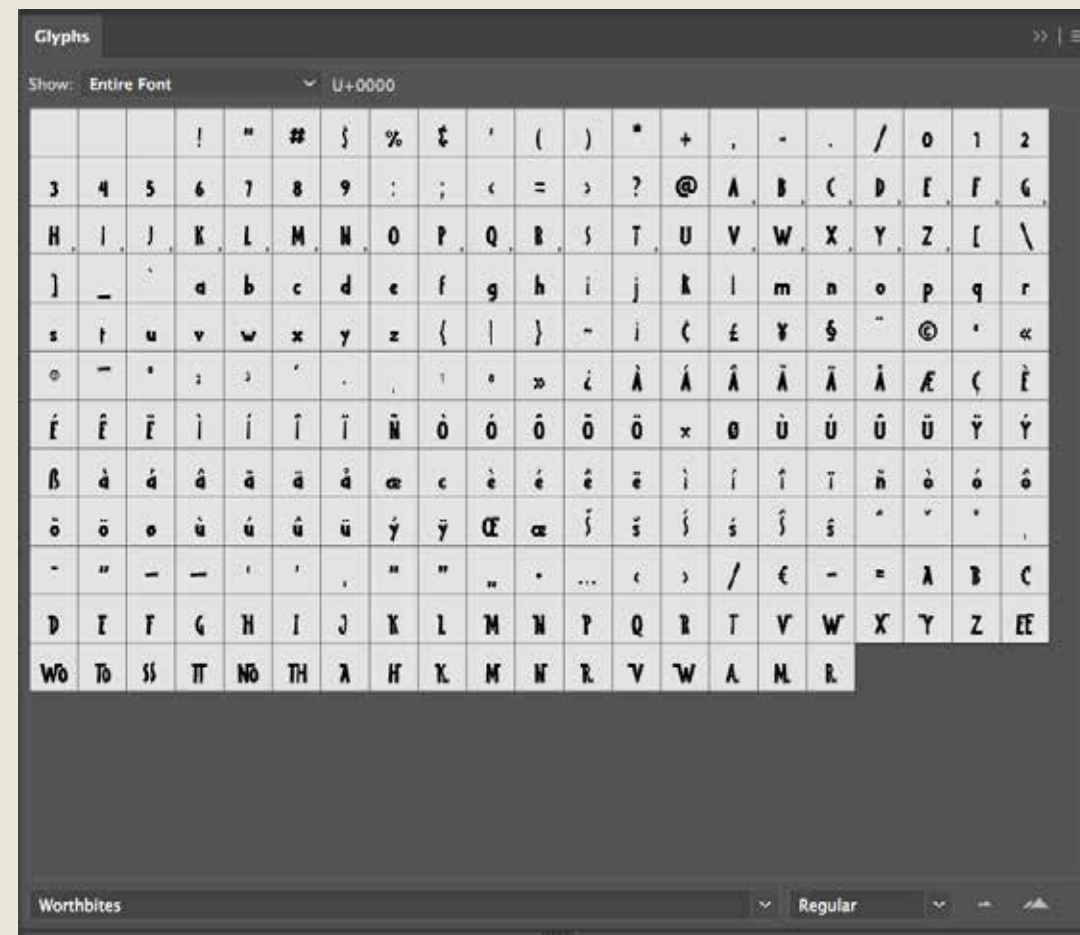




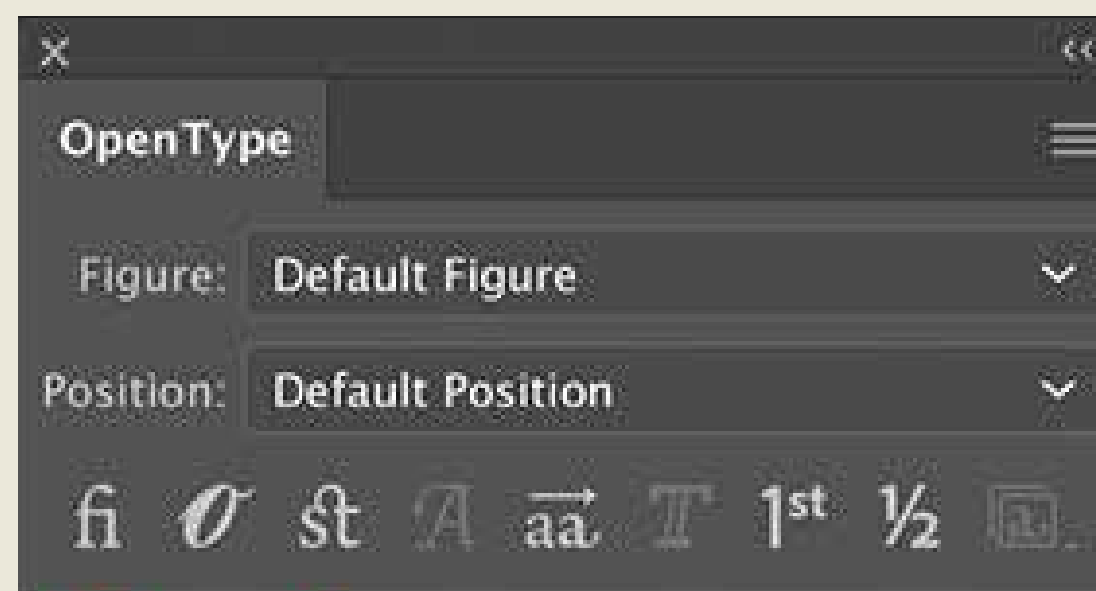
This is a little instruction that can help you access all extra glyphs (ligatures, alternatives etc) in my fonts.

HOW TO USE ALL GLYPHS IN ILLUSTRATOR:

1. Open Adobe Illustrator and create a new document. Head over to Window > Type > Glyphs to open the Glyphs panel.



2. To activate or deactivate ligatures, alternate, swash open the OpenType panel by going to Window > Type > OpenType.



↑ ↑ ↑ ↑ ↑
01 02 03 04 05

01. Button activates Standard Ligatures.
02. Button activates Contextual Alternates.
03. Button activates Discretionary Ligatures.
04. Button activates Swash.
05. Button activates Stylistic Alternates.

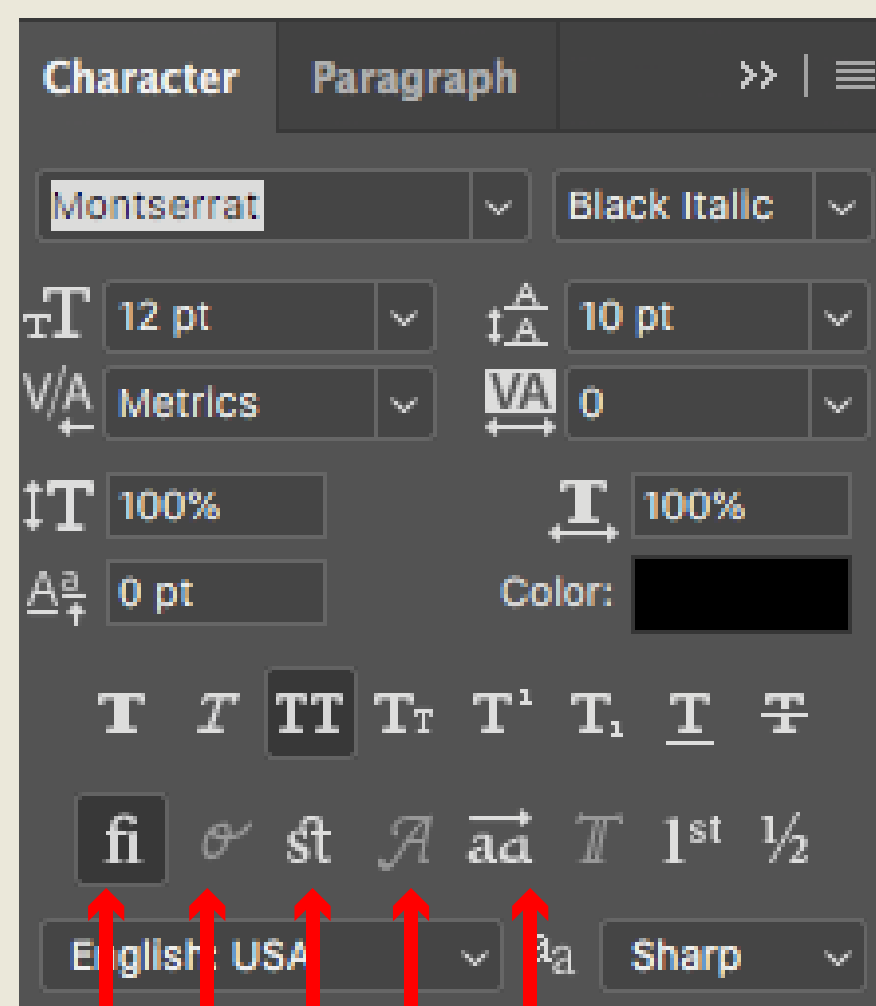
This is a little instruction that can help you access all extra glyphs (ligatures, alternatives etc) in my fonts.

HOW TO USE ALL GLYPHS IN PHOTOSHOP:

1. Open Adobe Photoshop and create a new document. Head over to Window > Glyphs to open the Glyphs panel.



2. To activate or deactivate ligatures, alternate, swash open the OpenType panel by going to Window > Character.



01 02 03 04 05

01. Button activates Standard Ligatures.
02. Button activates Contextual Alternates.
03. Button activates Discretionary Ligatures.
04. Button activates Swash.
05. Button activates Stylistic Alternates.

INVASI TYPE

This is a little instruction that can help you access all extra glyphs (ligatures, alternatives etc) in my fonts.

HOW TO USE ALL GLYPHS IN INDESIGN:

1. Open Adobe InDesign and create a new document. Head over to Window > Type > Glyphs to open the Glyphs panel.



2. To activate or deactivate ligatures, alternate, swash open the OpenType panel by going to Window > Type > Character.

